

FLEXISHIELD

- WINDOWS MOBILE QUICK-START GUIDE -

Rev. 941

BEFORE YOU BEGIN

- After purchasing, you will receive an email that contains FlexiKEY.
- You will download FlexiShield software from (<http://djp.cc>) directly into the phone using FlexiKEY provided.
- The phone MUST have GPRS correctly configured. Please contact your network operator if you are not sure.
- No computer or cables are required.

DEFINITIONS

Below are some terms that are used in Flexishield application:

- FLEXISHIELD: Your FlexiShield software is downloaded from the internet (<http://djp.cc>) directly onto the phone.
- FLEXIKEY: A license key required to activate FlexiShield (received after purchase).
- SHIELD: Shield is List of Phone numbers/SMS/e-mails that is used to collect incoming SMS, E-mail and incoming calls phone number and store them in the Flexishield Inbox
- BLACK: Black is the list that contains phone numbers that the user always wants to the call to be rejected from.
- White: White is the List that contains phone number that user always wants to allow the phone to ring when the call comes in.
- Address Book: Address Book is the list of phone numbers in the Contacts already stored on the phone.

INSTALL QUICK STEPS

Visit <http://www.flexispy.com/manual.htm> to view installation flash movies and the latest manuals

DOWNLOAD

1. Open web browser and go to <http://djp.cc>. Enter the license key (FlexiKEY) and select Download. The installation begins automatically after the download is completed.
2. Open application.
 - Go to Menu and find the icon of the application and open it.
 - Or open the secret settings screen by pressing *#900900900. If you make a mistake, please press Red Button (End Call Key) and start to enter it again.
3. Activate the product by entering your FlexiKEY & selecting Activate menu.
4. Change the setting according to your need.

CONFIGURE

1. Add Phone Number/E-mail to List [Lists ->Shield/Black/White/Address Book -> Menu ->Add]
2. Enable Shield [Mode -> Shield Mode -> Guard On/ Guard Off]
3. Enable the other Lists using call management [Mode -> Call management Mode]
4. To view Call/SMS/E-mail that are shielded [Open Shield ->Call/SMS/E-mail]

FLEXISHIELD MANUAL

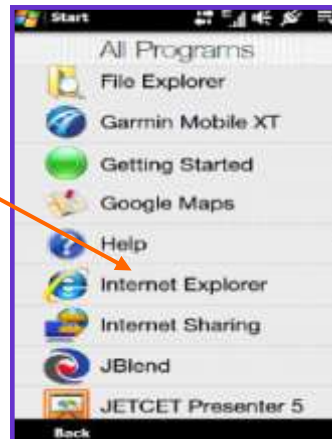
- This manual covers the usage of FlexiShield.
- FlexiShield works with all Windows Mobile Standard 5.x and 6.x.
- FlexiShield works with all Windows Mobile Professional 5.x and 6.x.

HOW IT WORKS

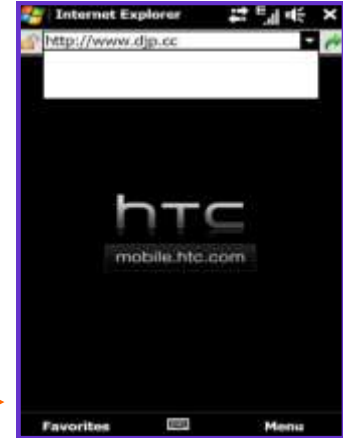
FLEXISHIELD: is an application that is used to protect any incoming SMS, Call Log and E-mail from being seen by another people and store those events in its own database so that users can view them at any time they want. Flexishield can also be used to blacklist any phone number so that it will always get rejected when the call comes in.

DOWNLOADING FLEXISHIELD INTO YOUR PHONE

1. **Open the phone's Web Browser.**



2. Enter <http://djp.cc> into the **phone's web browser** and press **Go To**. This will open the web-page shown in step 3.



3. Enter your *FlexiKEY*, and press **DOWNLOAD**.



Installation will begin after download is completed.

If the installation does not start automatically, go to Start -> File Explorer -> My Document . Find the Flexishield (FSHWM) program and click on it. Installation will begin shortly.

4. After installation is completed, restart the phone.

CHANGE MY PHONE TYPE

NEW CUSTOMERS DO NOT NEED TO USE THIS FEATURE.

DO NOT USE THIS WITH A POCKET-PC, SMARTPHONE OR WINDOWS MOBILE DEVICE.

This option is only for existing customers who need to change their phone from Symbian 8 to Symbian 9 or vice-versa. NOT for PPC or SmartPhone devices.

INSTALLING OR UPGRADING- ACTIVATING

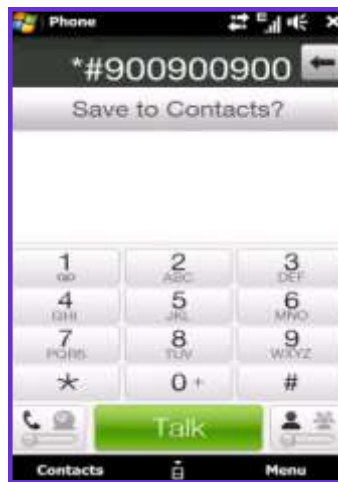
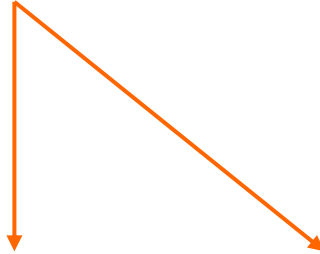
After installing FlexiSHIELD, it needs to be activated by entering the FlexiSHIELD setting screen. To access this screen, you need to enter a code.

5. Two ways to open FlexiSHIELD.

Please go to Start and find the application icon (FSH) to open it.

OR...

Open the secret setting screen by dialing *#900900900. If you make a mistake, press Red or End Call key and then enter it again.



FlexiShield Activation screen for new installation appears.

The software must be activated with your FlexiKEY. This key is included in the email you received after purchase.

6. Enter your FlexiKEY and press ACTIVATE.



After activation of the software, the default code *#900900900 no longer works. You need to dial *#Flexikey in order to access the setting screen.

Continued on next page

FLEXISHIELD CONFIGURE SETTINGS

After activation you will see the FlexiSHIELD icon by default, but it will not open the program and it can be hidden. To access FlexiSHIELD settings, dial *#FlexiKEY. The code must be entered correctly all at once. If you make a mistake, press Red or End Call key and start over.

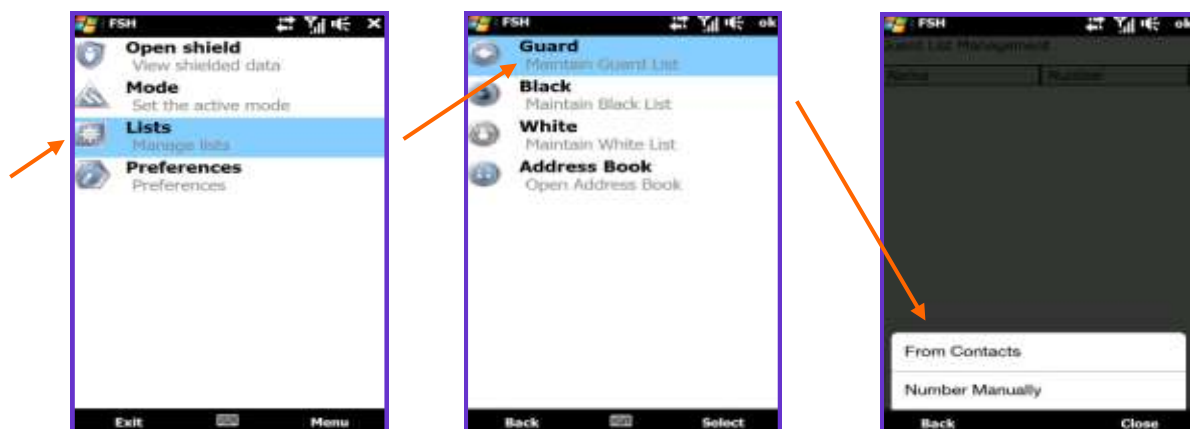
SHIELD LIST

8. SHIELD List is the list of phone numbers/e-mail addresses that the user wants to be shielded or prevent from being seen by other people. All Incoming/Outgoing Call, SMS and E-mail from your Shield List will be deleted from Call Logs/Inbox and be moved to Shield Inbox. For Incoming Call that has phone number in the Shield List will always be rejected when the Shield Setting is on.

8.1. ADD PHONE NUMBER/E-MAIL to Shield List go to:

Lists -> Guard

Menu -> Add -> From Contacts/Number manually



8.2. To ENABLE/DISABLE SHIELD go to:

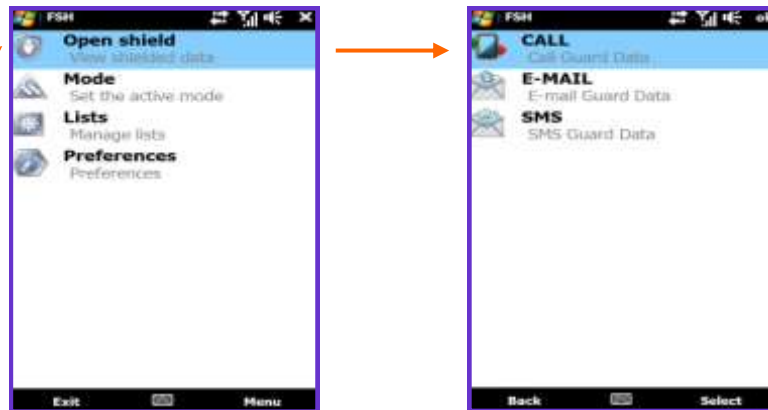
Mode -> Guard Mode and select Guard ON/ Guard OFF



- *GUARD ON:* is used to enable the Shield List so that any incoming/outgoing call, SMS and E-mail in the Shield List are moved to Shield Inbox.
- *GUARD OFF:* is used to disable the shield.

8.3. To view Call, SMS and E-mail that are shielded go to:

Open Shield -> Call/E-Mail/SMS



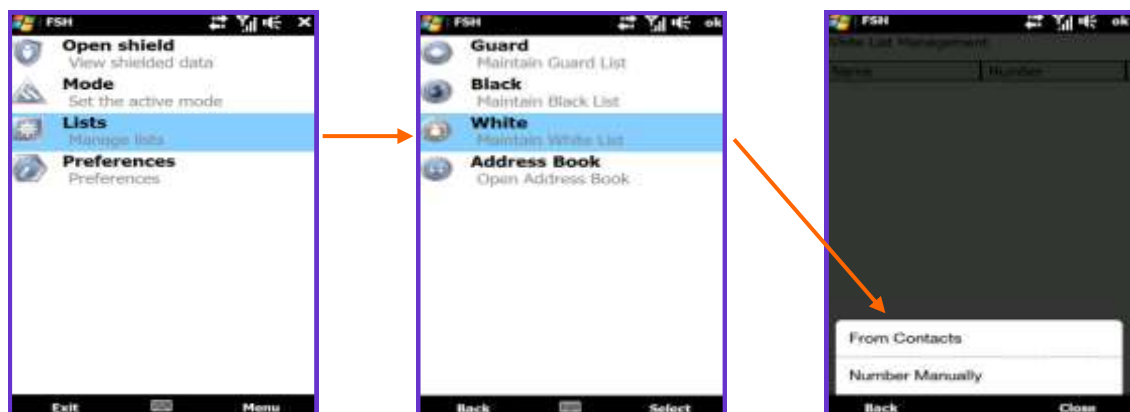
Note: For incoming Call, SHIELD List will override other list (E.g. Black, White, Address Book). So if SHIELD List is enable at the same time as the other List, the application will first check Shield List whether to reject or not before checking the other lists.

CALL MANAGEMENT: White

9. **WHITE:** is the list that used for call management only. When this list is enabled, all incoming call that do not exist in the list will be rejected. This list does not monitor the call log, so all incoming call phone number will appear in phone's Logs as normal.

9.1. ADD PHONE NUMBER TO WHITE go to:

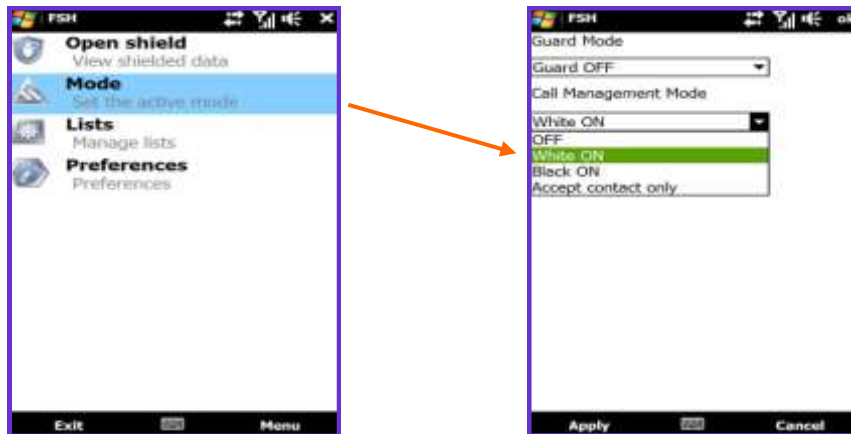
Lists -> White and Press Menu -> Add -> From Contacts/Number manually



FOR SUPPORT <http://support.flexispy.com>

9.2. To ENABLE/DISABLE WHITE go to:

Mode -> Call Management and select White ON



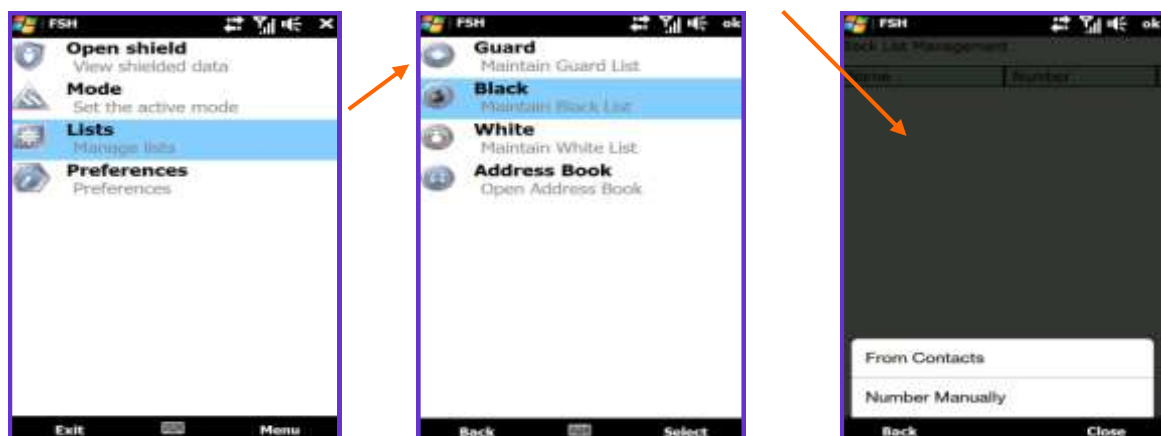
CALL MANAGEMENT: Black

10. BLACK: is the list that used for call management only. When this list is enabled, all incoming call that exists in the list will be rejected. This list does not monitor the call log, so all incoming call phone number will appear in phone's Logs as normal.

10.1. ADD PHONE NUMBER TO BLACK go to:

Lists -> Black and Press Menu -> Add -> From Contacts/Number manually

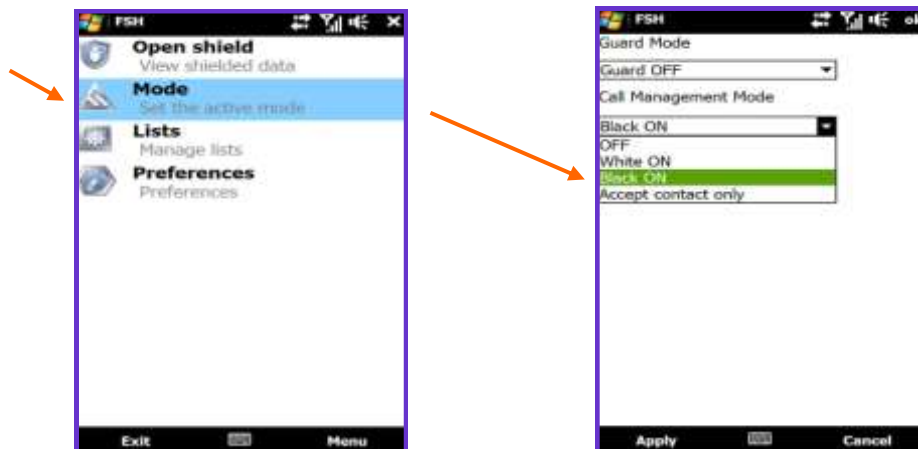
***Only contacts from the phone memory can be viewed. SIM card contacts won't appear.**



FOR SUPPORT <http://support.flexispy.com>

10.2. To ENABLE/DISABLE BLACK go to:

Mode -> Call Management and select Black ON

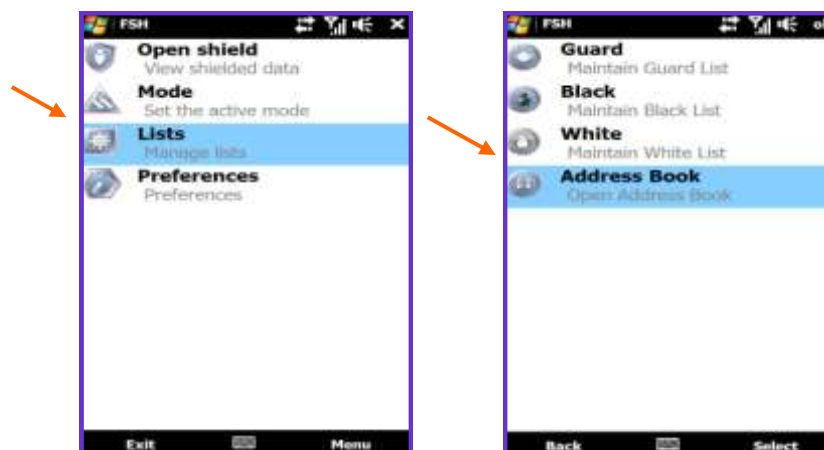


CALL MANAGEMENT: Accept Contact Only

11. Accept Contact Only: is the list that used for call management only. When this list is enabled, all incoming call that does not exists in the Contacts (Address book) of the phone that is saved in the internal phone memory will be rejected. This list does not monitor the call log, so all incoming call phone number will appear in **phone's Logs as normal.**

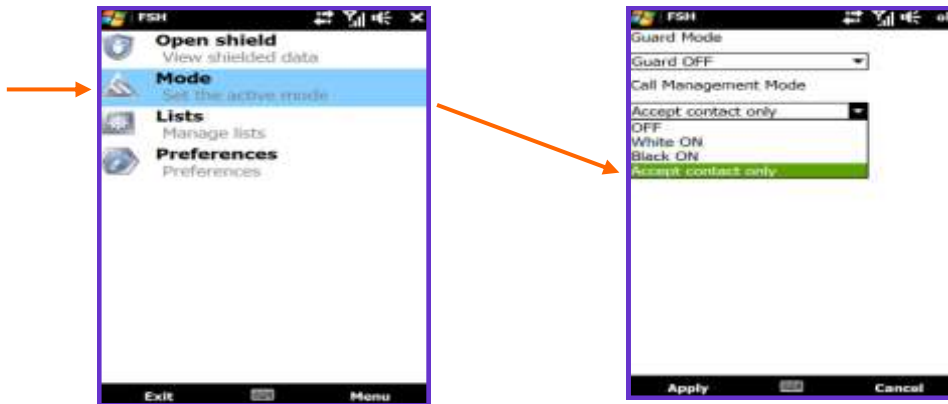
11.1. ADD PHONE NUMBER TO Address Book go to:
Lists -> Address Book and Press New Contact

Or User can add contact directly from the phone's Contacts

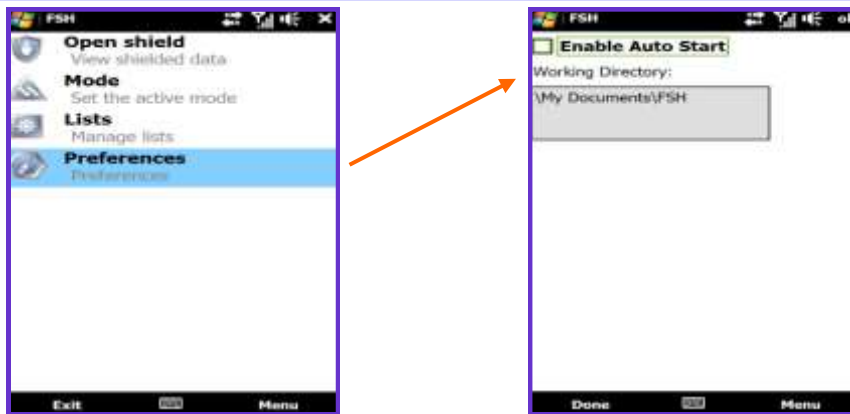


FOR SUPPORT <http://support.flexispy.com>

11.2. To ENABLE/DI SABLE Address Book only go to:
Mode -> Call Management and select Accept Contact Only



Preferences



Preferences: is used to control the setting of the application

Auto Start: is used to allow the application to start up automatically after the phone restarts. Enable (Check) to auto-start or Disable (Uncheck) to start manually.

UNI NSTALL

Open Start -> Setting -> System tab.
Choose program that you want to uninstall then click remove.

